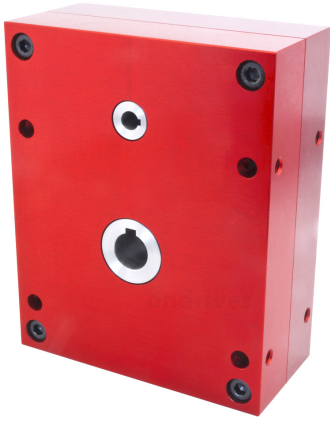


FFS30

ondrives

Precision Gears

Parallel Offset Gear Reducers



67.3mm Centres Parallel Offset Gear Reducers

10mm Input Bore 20mm Output Bore • T_{2n} 21.5Nm – 166Nm **2:1 - 7:1**

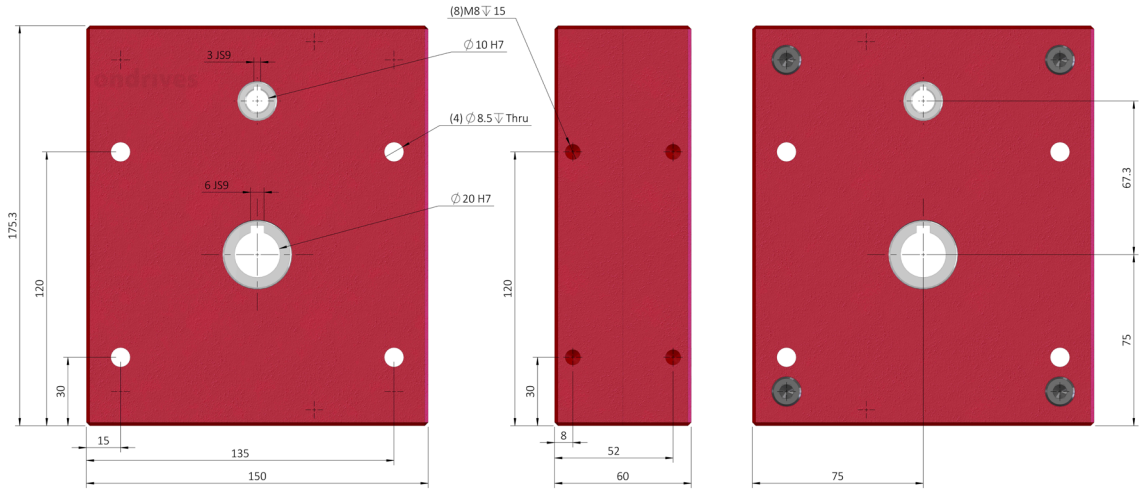
Spur - Helical Gears.

Standard Versions - Standard Torque

Steel Gears, will give you good levels of strength and torque in use.

XH Versions - High Torque

Hardened Gears, will give you high levels of strength and torque in use.



Output Backlash j	Part Numbers	Output Backlash j AR	Gear Ratio i	Efficiency η_z	Torque Version
$\leq 0.50^\circ$	Output Backlash j A	$\leq 0.08^\circ$		n1nom	
FFS30-2-10	FFS30-2A-10	FFS30-2AR-10	2:1	93%	Std
FFS30-3-10	FFS30-3A-10	FFS30-3AR-10	3:1	93%	Std
FFS30-4-10	FFS30-4A-10	FFS30-4AR-10	4:1	93%	Std
FFS30-5-10	FFS30-5A-10	FFS30-5AR-10	5:1	93%	Std
FFS30-6-10	FFS30-6A-10	FFS30-6AR-10	6:1	93%	Std
FFS30-7-10	FFS30-7A-10	FFS30-7AR-10	7:1	93%	Std
FFS30-XH-2-10	FFS30-XH-2A-10	FFS30-XH-2A-10	2:1	93%	High
FFS30-XH-3-10	FFS30-XH-3A-10	FFS30-XH-3A-10	3:1	93%	High
FFS30-XH-4-10	FFS30-XH-4A-10	FFS30-XH-4A-10	4:1	93%	High
FFS30-XH-5-10	FFS30-XH-5A-10	FFS30-XH-5A-10	5:1	93%	High
FFS30-XH-6-10	FFS30-XH-6A-10	FFS30-XH-6A-10	6:1	93%	High
FFS30-XH-7-10	FFS30-XH-7A-10	FFS30-XH-7A-10	7:1	93%	High

Weight: 5.5kg.

Nom. Input Speed [S5 T_{2n}] n1nom: 1,000 min^{-1} (r/min)

Max. Input Speed n1max: 2,000 min^{-1} (r/min)

Lubrication: Grease Shell Gadus S5 V42P 2.5

Lubrication Temperature: Max. Operating $\approx 60^\circ\text{C}$

Max. Input Radial Load F_{r1} : 200N.

Max. Output Radial Load F_{r2} : 600N.

Max. Output Axial Load F_{a2} : 400N.

Testing in your application is necessary.

You will need to assess duty cycles and confirm suitability with your own calculations.

Figures listed are for guidance only.

Cooling may be needed dependent on application.

ondrives

Precision Gears

T: +44 1246 455500

sales@ondrives.com www.ondrives.com

Updated January 2024 subject to change for use as a guide only.

67.3mm Centres Parallel Offset Gear Reducers

10mm Input Bore 20mm Output Bore • T_{2n} 21.5Nm – 166Nm **2:1 - 7:1**

FFS30 FFS30 2:1 - 7:1 Series Parallel Offset Gearboxes

